



*Ducati Ducati 1199 Panigale S (Tamiya 14129, 14132) – chain*

*Catalog no.: FSM P003*

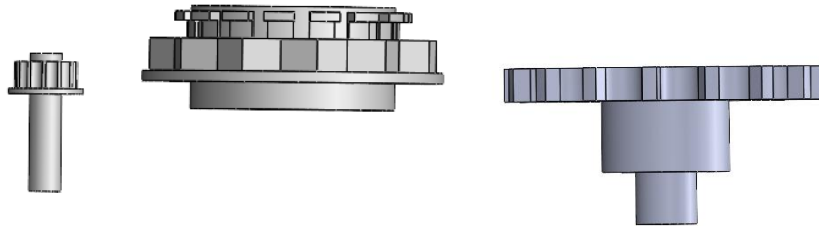
## Installation guide

1. Remove all supports holding the chain. Use sharp cutters like Tamiya 74035. Do not break off the chain. See the video on supports removal at [www.falconscalemodels.com](http://www.falconscalemodels.com) in the manual section.
2. Remove all the supports holding other parts:

**REMARK 1:** Front sprocket screw has an installation pin in the center.

**REMARK 2:** Rear sprocket screws should have an installation pin.

Properly cut off parts:



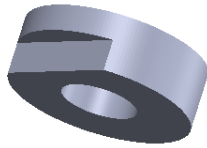
3. Remove all the supports holding sprockets and smooth the back surface of the sprockets.
4. Using 0.6 – 0.65mm drill correct holes in both sprockets in which the screws will be installed.
5. Smooth the top surface (marked in blue) to remove the printing layer lines.



6. Install rear sprocket screws using CA glue or Micro Kristal Klear. Keep screws slight longer than needed at they have to pass through the rear sprocket.
7. Install the sprockets inside the chain.  
See the video on sprocket installation at [www.falconscalemodels.com](http://www.falconscalemodels.com) in the manual section.  
Gently widen the chain and insert the sprocket onto the central pints of the chain arc.  
In the next step, lightly raise the chain and pull it in the direction of the opposite sprocket to place all the pins on the sprocket. Secure the sprockets position using CA glue or Micro Kristal Klear having in mind remark 2 from step 5.

8. Split the chain using base kit part as a reference. Cut links one by one. Do not cut all links at once as you can damage the chain.

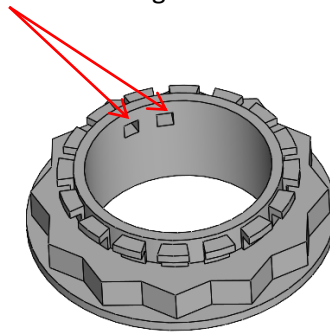
9. Install the adapter



in the swingarm.

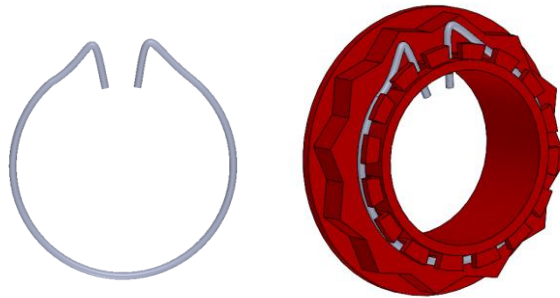
10. Install the chain on the swingarm followed by the rear sprocket mounting disc with preinstall screws (parts from points 5 and 6). Rear sprocket has a center hole to match with the position of the adapter.

11. Create a locking cotter from the metal wire. Make 2.  
Note that central nut has 2 holes for a locking cotter.



The locking cotter can be done in 3 ways:

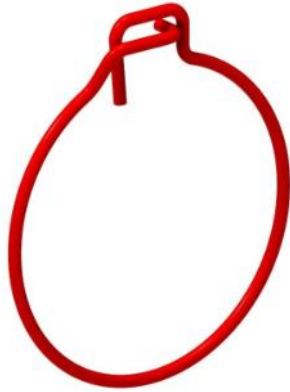
Version 1:



Version 2:

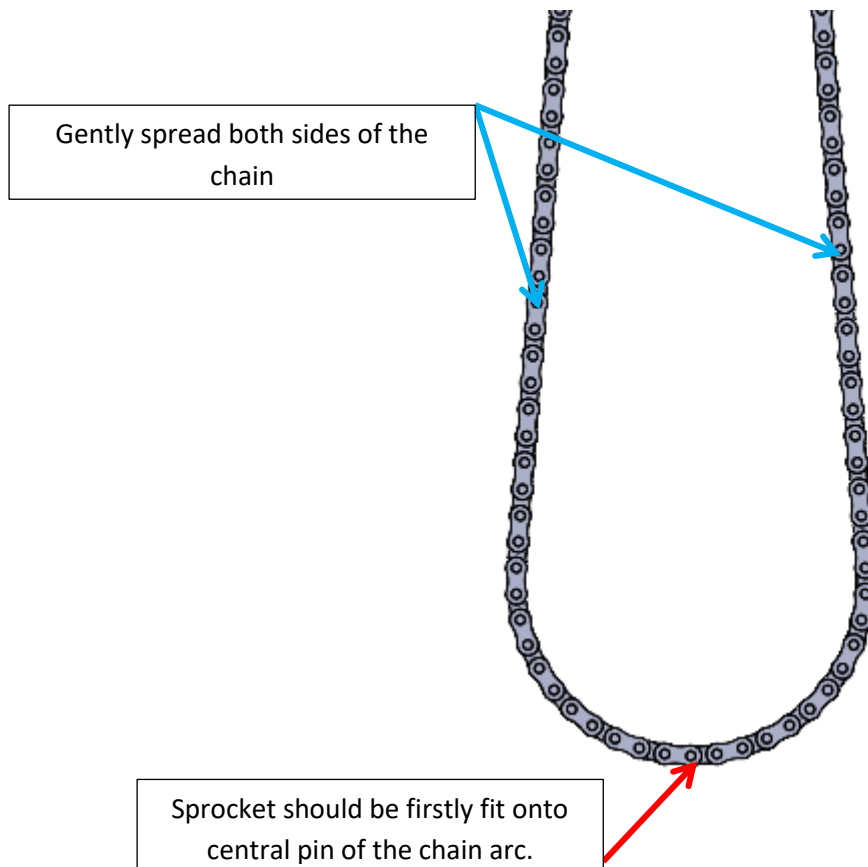


Version 3:



12. Install central nut on the rear sprocket mounting plate.
13. If you would like to install the central nut with the locking cotter on the right side of the rear wheel, one needs to modify the rim by sanding down the nut on base kit part and replacing it with the 3D printed one.

#### Sprocket installation



Proper position of the sprocket inside the chain (general view).

